

Local development strategy

for the LEADER region Westmecklenburg Baltic coast

Funding period 2023 until 2027



Shaping the future with LEADER

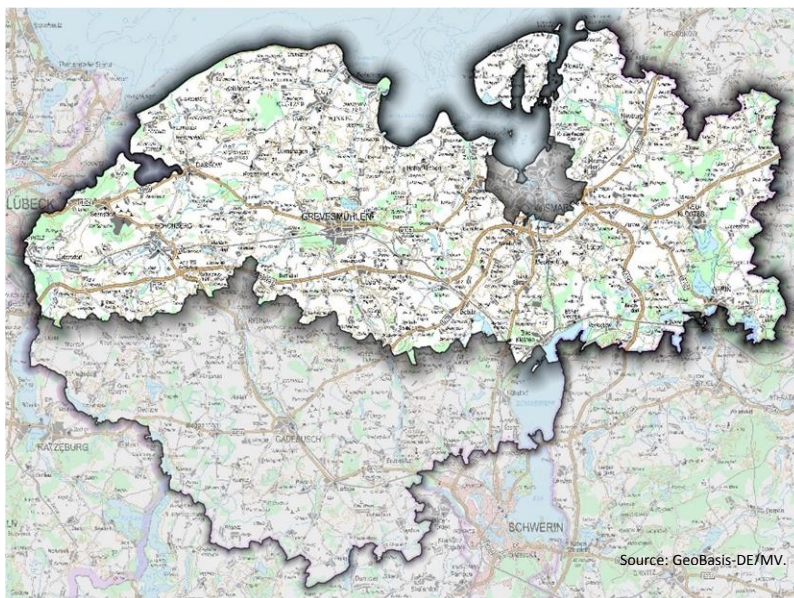
www.nordwestmecklenburg.de/de/laendliche-entwicklung-landwirtschaft.html

LEADER und the LAG – What’s this?

LEADER is a funding program by the European Union to support the development of rural areas. The abbreviation stands for „Liaison Entre Action de Developpement de l’Economie Rurale“. This is French for „Connecting activities to develop the rural economy“. Public service partnerships, so-called Local Action Groups (LAGn), are the promoters of the LEADER program in the individual LEADER regions such as Westmecklenburg Baltic coast.

The LEADER region Westmecklenburg Baltic coast

The LEADER region comprises the coastal area of the district Nordwestmecklenburg with the administrative bodies Schöneberger Land, Klützer Winkel, Grevesmühlen-Land, Dorf Mecklenburg-Bad Kleinen, Neukloster-Warin and Neuburg as well as the city of Grevesmühlen and the municipality island Poel. Approximately 82.200 inhabitants live on an area of 1.364 square kilometers. That corresponds to population density of 60 inhabitants per square kilometer. In the respective region the LEADER program will be implemented by the LAG of the same name.



The landscape of the region is characterized by wide open natural areas,

picturesque villages, extended avenues and appealing castles and manor houses. Small settlements and communities are evenly spread throughout the region. Due to its position on the Baltic Sea and scenic surroundings, tourism plays an important role in this area. Klützer Winkel with the Baltic resort Boltenhagen as well as island Poel are beacons of Baltic tourism. The nature park Sternberger Land, the city Neukloster with the Sonnenkloster famous for northern Germany’s oldest glass paintings, the artist town Plüschow and the village Mecklenburg, known as the cradle of Mecklenburg, make the hinterland an attractive alternative for those seeking relaxation offside the centers of tourism. 70 per cent of all areas are used for agriculture. In the center of the region the Klützer Winkel has the country’s best soil and is widely known as Mecklenburg’s granary. Generally the economical structure of the region is characterized by medium-sized, small and micro enterprises.

All municipalities of the region are predominantly rural and are facing the same social and societal challenges: conservation of livable places, birth deficit along with ageing population resulting in a decline in insurable employment. Currently, a shrinking of the population can be compensated by immigration. However, forecasts speak of a demographic decline in the coming years.

Community station
Grevesmühlen



Nature station
Fischerkaten



Success stories in our region:

Projects of the funding period 2014-2020 (extended until 2023)

In the LEADER region Westmecklenburg Baltic coast 89 projects were funded in total. The total investment volume amounts to 14,8 million EURO, thereof 8,7 million EURO subsidies (Status 31.12.2022).

Guidelines and goals for our region

www.nordwestmecklenburg.de/de/laendliche-entwicklung-landwirtschaft.html

A new strategy for the funding period 2023 until 2027

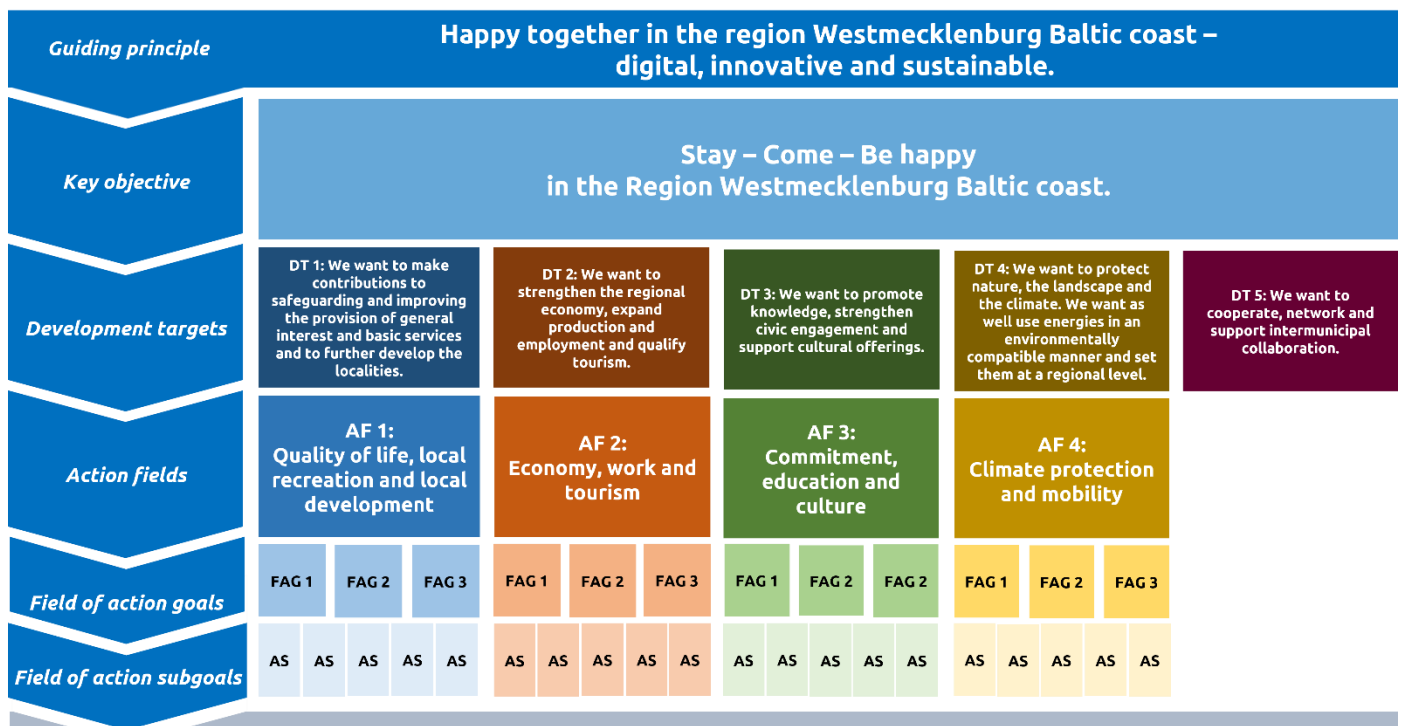
The strategy for the local development (SLE) of the LEADER region Westmecklenburg Baltic coast regarding the funding period from 2023 until 2027 was created in 2022 within a broad participation process.

The guidelines and goals provide the overriding principle of the strategy. The development goals are the key areas that should be addressed as a matter of priority when implementing the strategy. The development goals are assigned courses of action in which those projects and activities are meant to be carried out that are co-financed from the budget of the LAG Westmecklenburg Baltic coast. Each field of action will be supported by objectives and sub-objectives that the funding period 2023-2027 considering the specifics and challenges of the region.



Professional workshop

should be achieved within



Projects



Drop counting house Damshagen

Barn of tradition Kalkhorst



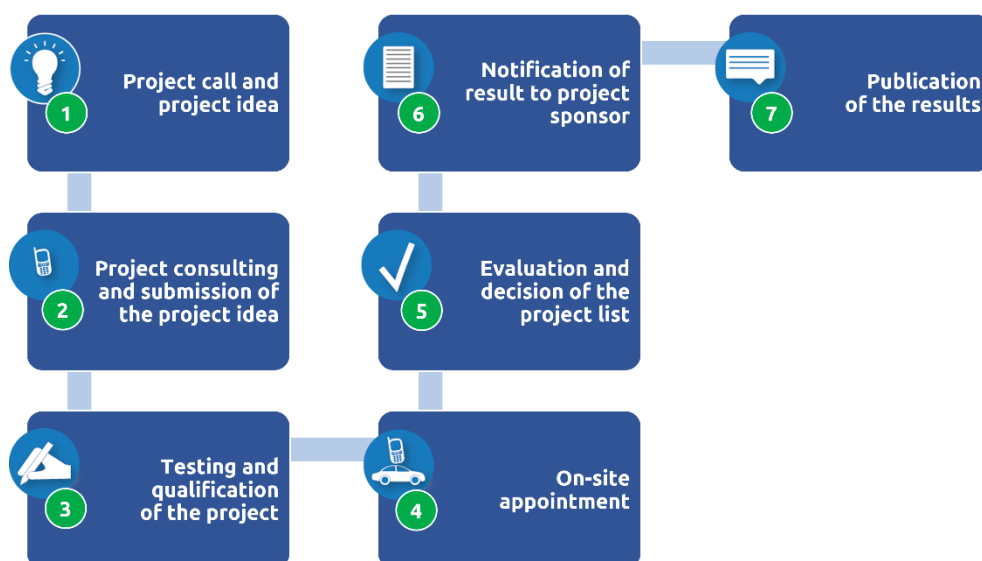
Schoolyard design Boltenhagen

Good projects wanted for our region

www.nordwestmecklenburg.de/de/laendliche-entwicklung-landwirtschaft.html

The selection process

The LAG Westmecklenburg Baltic coast is looking forward to good projects in the fields of action mentioned above. This way the self-set goals can be achieved. The selection of projects by the LAG takes place within the framework of a selection procedure. Feel free to participate with your project idea up to the 30th of June of a year. The regional LEADER management advises and supports you with the qualification of your project.



The regulations on the co-financing of projects by the LAG Westmecklenburg Baltic coast

The funding rate and the maximum head for the project funding result from the project manager’s affiliation to specific actors and the thematic focus of the project.

Project developer	education, concepts	village development	economy
Municipalities	70% max. 50k EUR	70% max. 300k EUR	60% max. 300k EUR
Churches	60% max. 50k EUR	60% max. 200k EUR	60% max. 200k EUR
Non-profit sponsors/ charitable associations	80% max. 50k EUR	80% max. 200k EUR	60% max. 200k EUR
Companies	-	60% max. 200k EUR	60% max. 200k EUR
Natural persons	-	60% max. 200k EUR	60% max. 200k EUR

Please contact us. We will be happy to advise you and support you with your project.

**Local Action Group (LAG)
Westmecklenburg Baltic coast**

Chairman: Tino Schomann
Vice chair woman: Elke Lenschow

**LAG head office/
project and regional management LEADER**

District Nordwestmecklenburg
Sophie Maletzki, Daniel Scheel
Rostocker Straße 76, 23970 Wismar, Germany
phone: 0049 3841 3040 6687
email: leader@nordwestmecklenburg.de